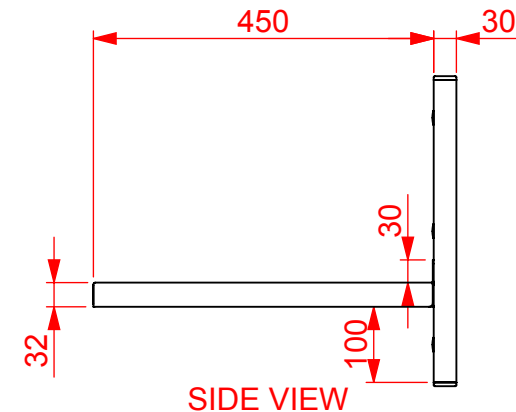
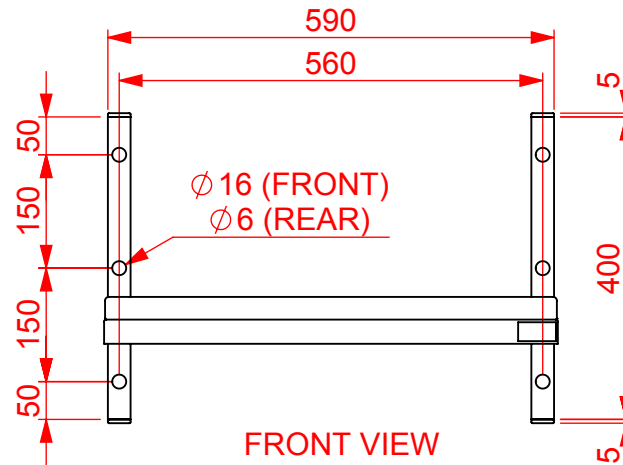
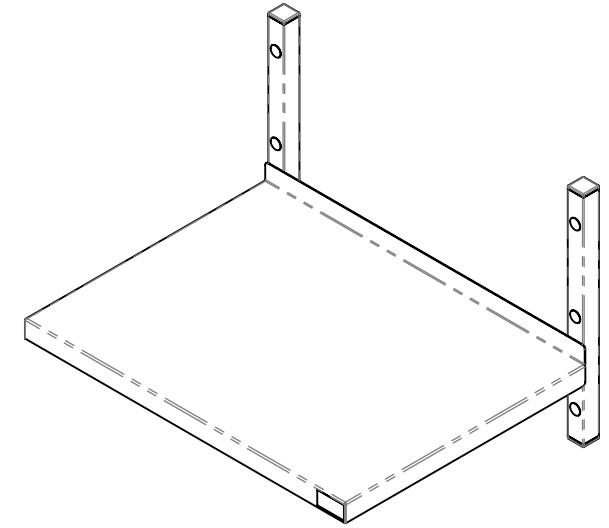
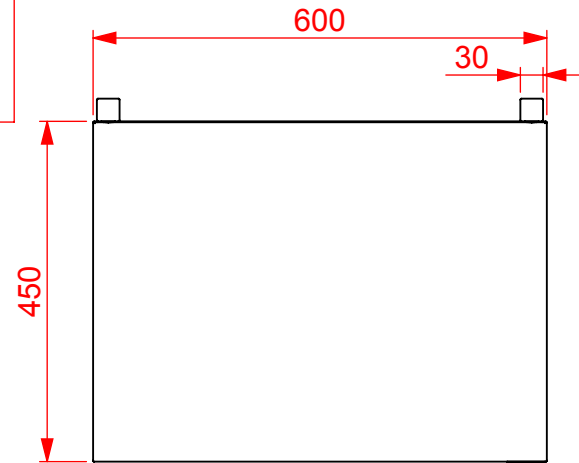


MATERIAL SPECIFICATIONS
 WORKTOPS: 1.2mm 304 GRADE ST.STL.
 FRAMEWORK: 30 x 30 430 GRADE
 ST. STL. BOX SECTION
 UNDERSHELVES: 1.2mm 430 GRADE ST. STL.
 FEET: ADJUSTABLE FLANGED
 (CAST ALUMINIUM)



MAX. LOAD 35kg DISTRIBUTED ACROSS TOTAL SURFACE AREA OF SHELF (SOLID WALL MOUNTING)

APPROVAL FOR
MANUFACTURE

Signature..... Print.....

DO NOT SCALE

A

NEW DESIGN

01/02/2019

CUSTOMER Ref:

REV.

REVISION

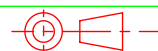
DATE



CED FABRICATIONS LTD
 CLAYTON HOUSE
 CLAYTON BUSINESS PARK
 CLAYTON-LE-MOORS
 HYNDBURN
 LANCASHIRE BB5 5JD

This drawing and information herein is confidential to CED Fabrications Ltd. It is issued in confidence that it will not be disclosed to any third party in part or in whole without permission from CED FABRICATIONS Ltd.

© 2005 CED FABRICATIONS LTD



TITLE: HD M.WAVE SHELF-400(H)x600(L)x450(D)

REV No: A

DRAWN BY: AHR

CUSTOMER O/No:

DRG No: QMS645HD

DATE: 05/02/2019

SCALE: 1:10